


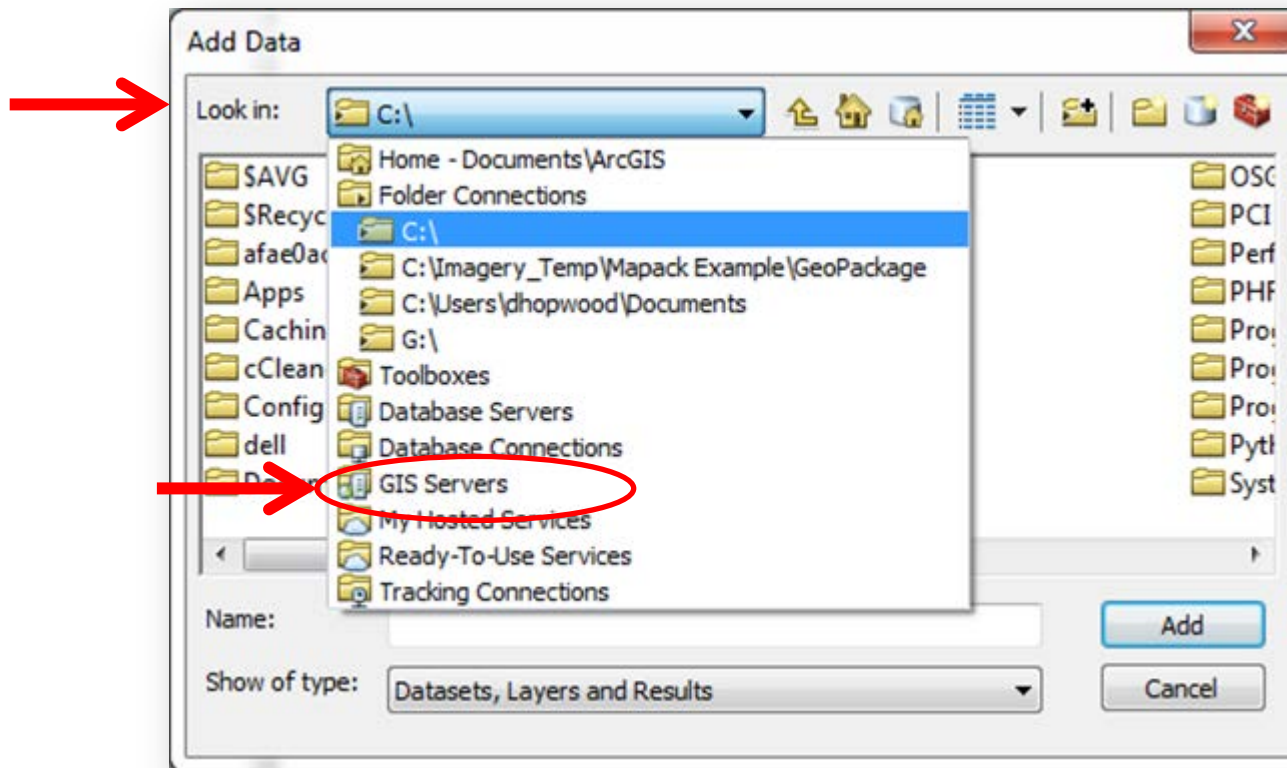
Adding the New WMS/WTMS Alaska Statewide Ortho-imagery service to ArcMap

Part #1

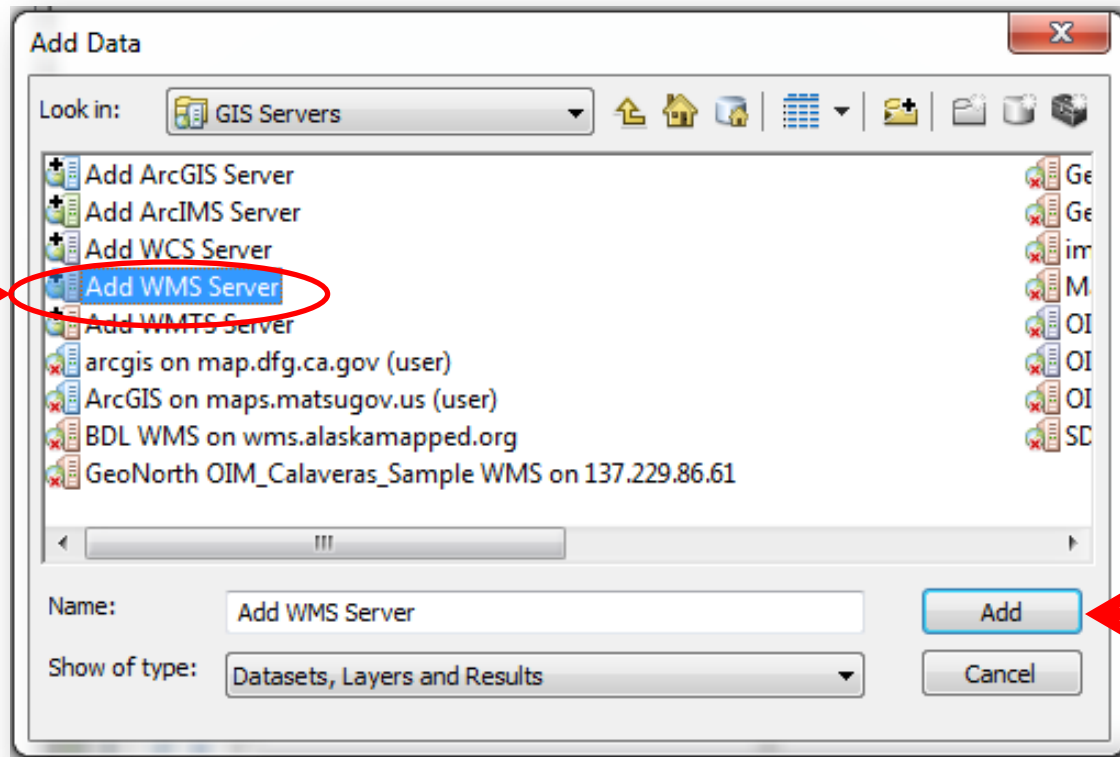
Loading a new WMS/WMTS service in
ArcMap for the first time

There are multiple ways to load WMS/WMTS services into ArcMap, this is one method

- Step #1 – Open ArcMap
- Step #2 – Click “Add Data” Icon 
- Step #3 – The “Add Data” window will pop up, click the “Look in” drop down menu and select “GIS Servers”



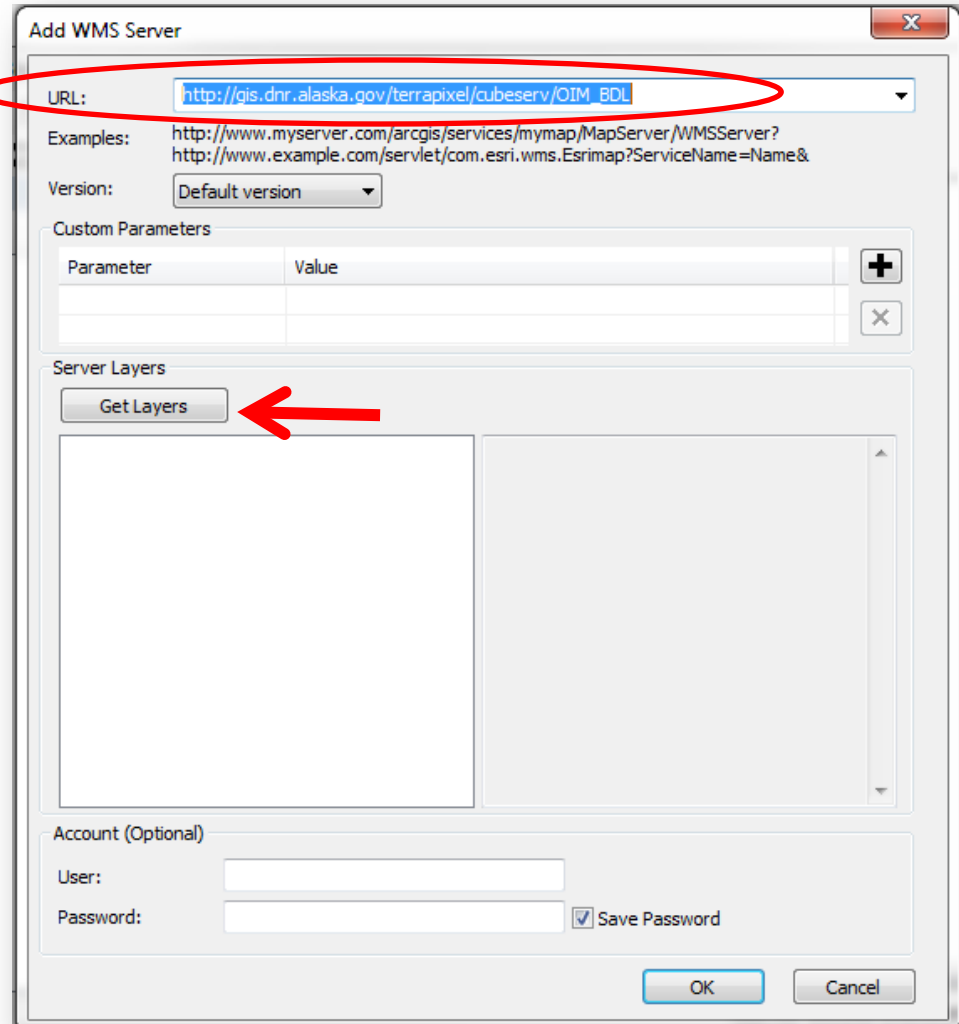
- Step #4 – Select “Add WMS Server” (or “add WMTS Server”) and click the “Add” Button.
 - Note: the process is identical whether the user wishes to connect to the WMS or WMTS service. Most user would be better served by using the WMS, as the WMTS support a limited number of datums/projections.



- If you want to load the WMTS service, select “Add WMTS Server” and then click “Add”

- Step #5 – Enter the BDL WMS Url the URL: blank at the top the window. Then click “Ok.”
 - BDL URL http://gis.dnr.alaska.gov/terrapixel/cubeserv/OIM_BDL
 - The URL is the same regardless of whether you want access the WMS or WMTS service.

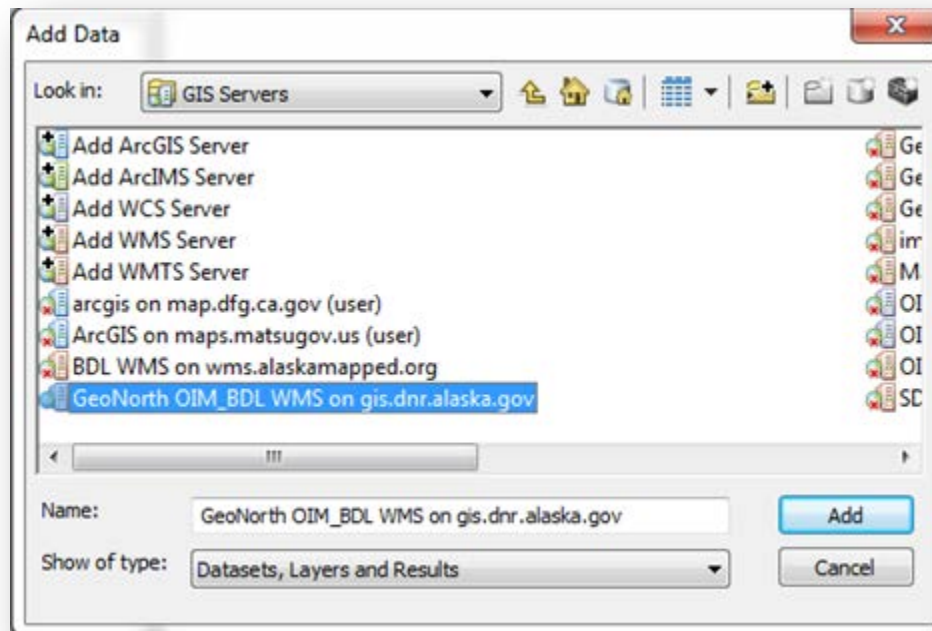
- Step #5A:
 - You can check the connection to the WMS service by clicking the “Get Layers” button. This is not required to load the service



The screenshot shows the 'Add WMS Server' dialog box. The URL field is highlighted with a red circle and a red arrow pointing to it from the left. The 'Get Layers' button is also highlighted with a red circle and a red arrow pointing to it from the left. The dialog box contains the following fields and controls:

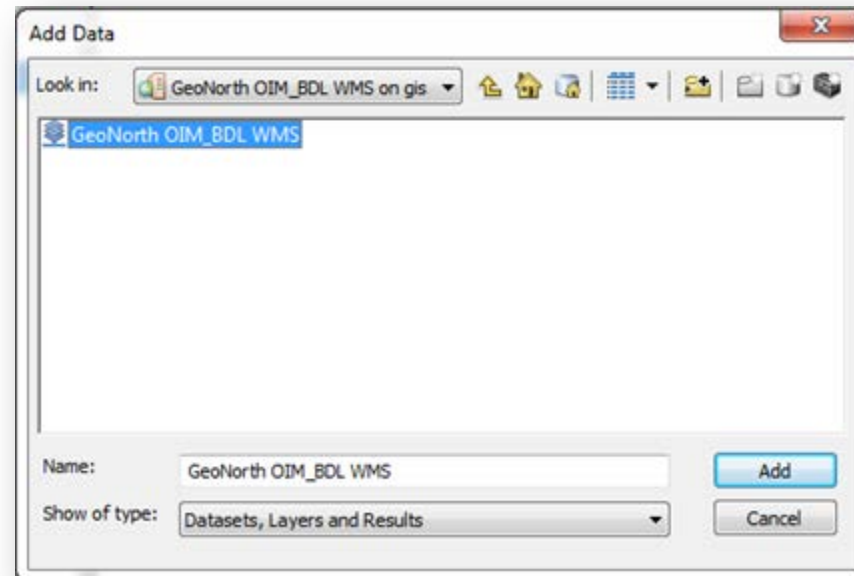
- URL: http://gis.dnr.alaska.gov/terrapixel/cubeserv/OIM_BDL
- Examples: <http://www.myserver.com/arcgis/services/mymap/MapServer/WMServer?>
<http://www.example.com/servlet/com.esri.wms.Esrimap?ServiceName=Name&>
- Version: Default version
- Custom Parameters: A table with columns 'Parameter' and 'Value', and buttons for adding (+) and removing (x) parameters.
- Server Layers: A 'Get Layers' button and a list area.
- Account (Optional): User and Password fields, with a 'Save Password' checkbox.
- Buttons: OK and Cancel.

- Step #6 – The “Add Data” menu will pop-up again and the WMS (or WMTS) service you added should be highlighted and click the “Add” button.
 - If the “Add Data” menu appears and the WMS (or WMTS) it is not highlighted in the “Add Data” menu, select the item that reads “GeoNorth_OIM_BDL_WMS on gis.dnr.alaska.gov”



- Step #7 – Keep clicking the “Add” button

- Step #7 – You will need to navigate through the available web services being hosted, in the case of the BDL web service there is only one service available,
 - Select “GeoNorth OIM_BDL WMS” the click the “Add” button




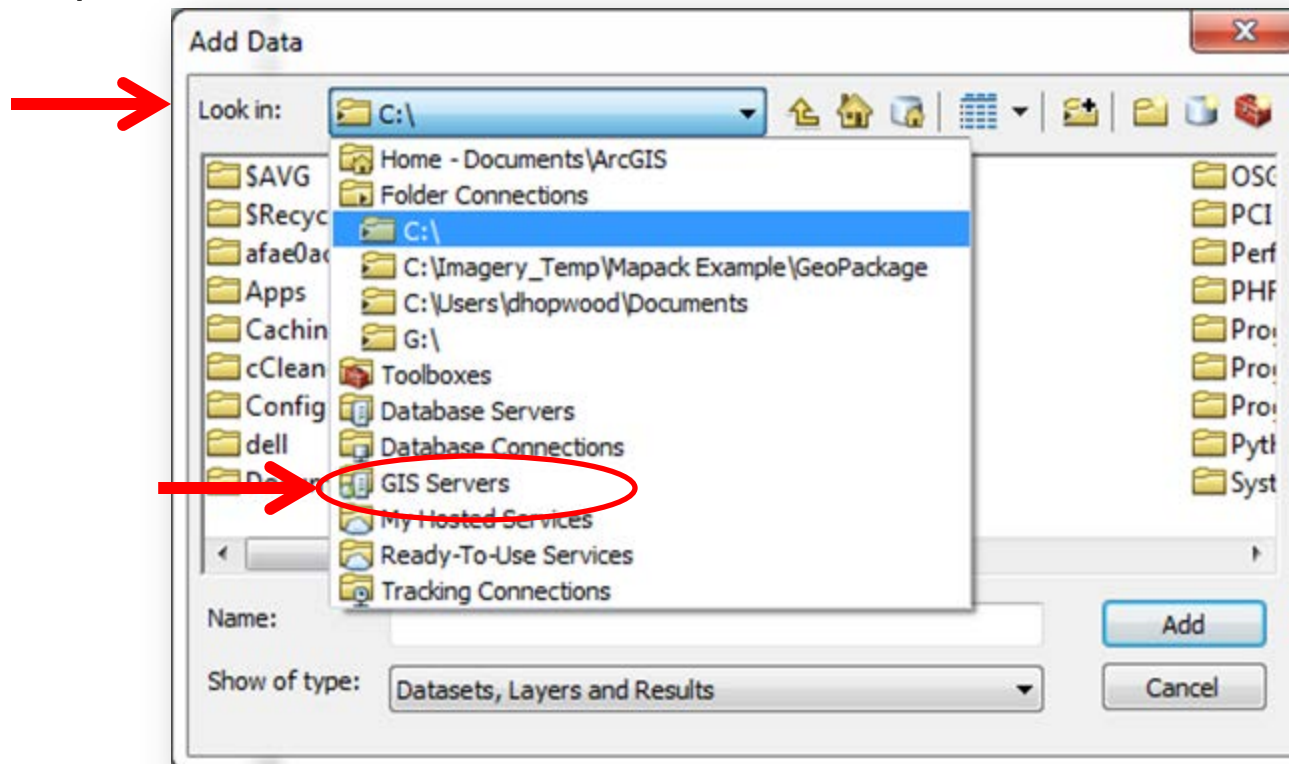
- Step #8 – The WMS (or WMTS) service should loaded into your ArcMap for use like any other dataset.

Part #2

Using a previously loaded WMS/WMTS service in ArcMap

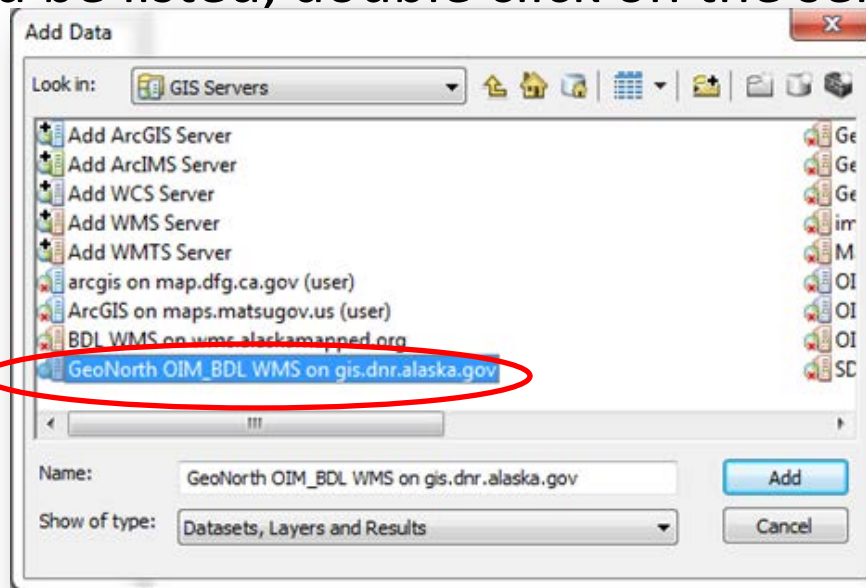
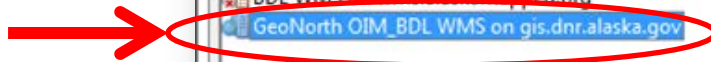
There are multiple ways to load existing WMS/WMTS services into ArcMap, this is one method


- Step #1 – Open ArcMap
- Step #2 – Click “Add Data” Icon 
- Step #3 – The “Add Data” window will pop up, click the “Look in” drop down menu and select “GIS Servers”

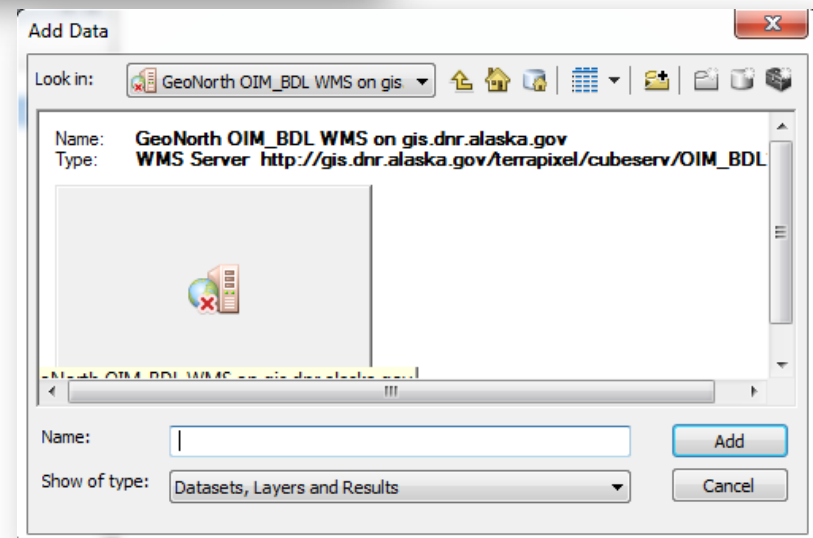


- Step #4 –The WMS (or WMTS) service you added in Part 1 should be listed, double click on the service.

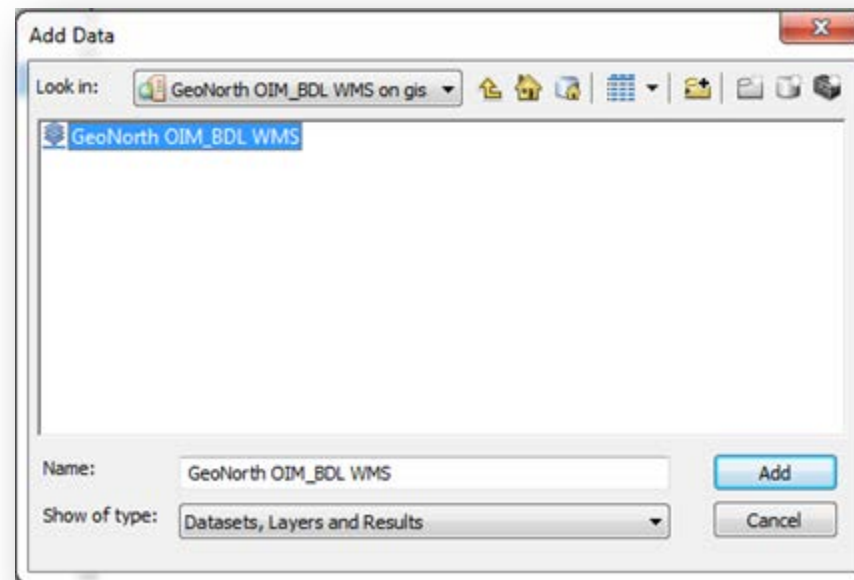
Double-click



Note: If you highlight the WMS service and click “Add” the “Add Data” menu may appear to have issue connecting to the server. If this is the case, click the “Up One Level”  button to go back and double-click on the server.



- Step #5 – You will need to navigate through the available web services being hosted, in the case of the BDL web service there is only one service available,
 - Select “GeoNorth OIM_BDL WMS” the click the “Add” button



- Step #6 – The WMS (or WMTS) service should loaded into your ArcMap for use like any other dataset.

Need Further Assistance?

Please email icc@geonorth.com for further assistance